

2026 PRE KINDY INFORMATION HANDBOOK



“Every child at Assumption is
known, valued and loved”



ASSUMPTION
CATHOLIC PRIMARY SCHOOL
MANDURAH

08 9583 8500 **P**
admin@assumption.wa.edu.au **E**

assumption.wa.edu.au

TABLE OF CONTENT

3	Welcome
4	Our Pre Kindy program
5	What to wear to Pre Kindy
6	What to bring to Pre Kindy
8	Where and when Is Pre Kindy?
8	Where to park at school
9	Arrival and departure procedures
10	The Morning Routine and Settling In
11	How to communicate with your child's teacher
12	More information

WELCOME TO OUR SCHOOL



Our Pre Kindy is a welcoming, warm and stimulating environment that embraces and nurtures the natural curiosity, creativity and open hearts of young people.

The program for three year old boys and girls provides purposeful play and meaningful experiences that promote the development of spiritual, social, emotional, language, intellectual, creative and physical skills.

The fully qualified teachers have created a caring, safe and stimulating environment that will nurture your child's disposition to wonder, explore and construct meaning about the world.

OUR PRE KINDY PROGRAM

- Assists children to positively transition into a safe, secure, stimulating and nurturing school environment.
- Enhances the development of children across the physical, social, emotional, cognitive, language, and spiritual domains, while also strengthening their self-regulation and mental wellbeing.
- Acknowledges, values, and celebrates each child's uniqueness, diversity, cultural background and languages.
- Encourages children to build relationships and friendships.
- Assists children to develop a positive self-image, confidence in themselves and build their sense of identity.
- Encourages self-help and independence in our young children.
- Provides intentional and meaningful learning experiences which are play-based and planned around the children's strengths, interests, and abilities.

Through their experiences at Pre Kindy, children's thinking is expanded, and positive dispositions towards learning is promoted.

We recognise parents as the first and most influential educators, and our Pre Kindy program complements parents in their efforts to develop the faith of their children



WHAT TO WEAR TO PRE KINDY

Wearing our school uniform is not compulsory in Pre Kindy.

Please send your child to school in clothes suitable for indoor and outdoor play, and apply sunscreen during the warmer months.

Your child may like to wear the school sports uniform, which can be purchased from **Perm-A-Pleat** located at Unit 2/76 Reserve Dr, Mandurah WA 6210. As part of this sports uniform, there is a special Kindergarten shirt that you may wish to purchase.

Sandals, sandshoes and velcro sneakers are the preferred footwear for school. We discourage thongs, "flip-flops" or "Crocs" as they are not suitable for running or climbing, and often can be unsafe.

Please refer to the **School Uniform Guidelines** in the Information Handbook for Families for information about expectations for grooming, hair and jewellery.

Understandably not all three-year olds are toilet trained. We are happy to support children in this learning process, and encourage the wearing of 'pull-ups' to assist with their independence.

Label everything with your child's name

Belongings may go missing and if items are labelled there is a good chance they will be returned. It will also assist your child on their journey to identify their own property.

WHAT TO BRING TO PRE KINDY

ON THE FIRST DAY

1 Tissues
Please bring a large box of tissues.

2 72-Page A3 scrapbook
The scrapbook will be used to place your child's work in during their time at Pre Kindy.

3 A small A4 sized pillow and / or blanket
For rest time.

4 Every day items
Please refer to the list below of items to bring every Pre Kindy day.

EVERY DAY

1 School bag
Whilst it is not compulsory, Assumption branded school bags may be purchased at purchased from Perm-A-Pleat in Mandurah.

2 Spare change of clothes
Please pack spare clothing in case of accidents.

3 If your child is in the process of toilet training:
Please pack pull-ups, baby wipes and disposable scented nappy bags.





4

Pre-cut piece of fruit or vegetables and a savoury snack

Fruit and vegetables are for Crunch&Sip (to graze on during the day). Additional fruit and vegetables and a small savoury snack, such as crackers, cheese sticks or yoghurt, can be placed in separate containers for afternoon recess.

Our school is NUT and EGG 'aware'

Please ensure that the following foods are NOT brought to school:

- nuts
- food containing nuts
- boiled eggs
- egg sandwiches

Baked goods containing eggs are fine in most cases.

If a child in the class has a serious food allergy, you will be notified.

5

Lunchbox

We encourage healthy food choices for lunch.

6

Water bottle

Bring along a child friendly, relatively spill proof bottle containing water. No juices, soft drinks or flavoured milk.

7

Full brimmed hat

The school has adopted a 'No Hat, Play In The Shade' policy. To help protect your child from the sun, please apply sunscreen before school. Sunscreen will be available at school to be applied as needed.

WHERE AND WHEN IS PRE KINDY?

Pre Kindy takes place **Tuesday and Friday** of the school term between **9.00am and 2.50pm**.

We have a designated early childhood area on campus which includes the Kindergarten classrooms and playground.

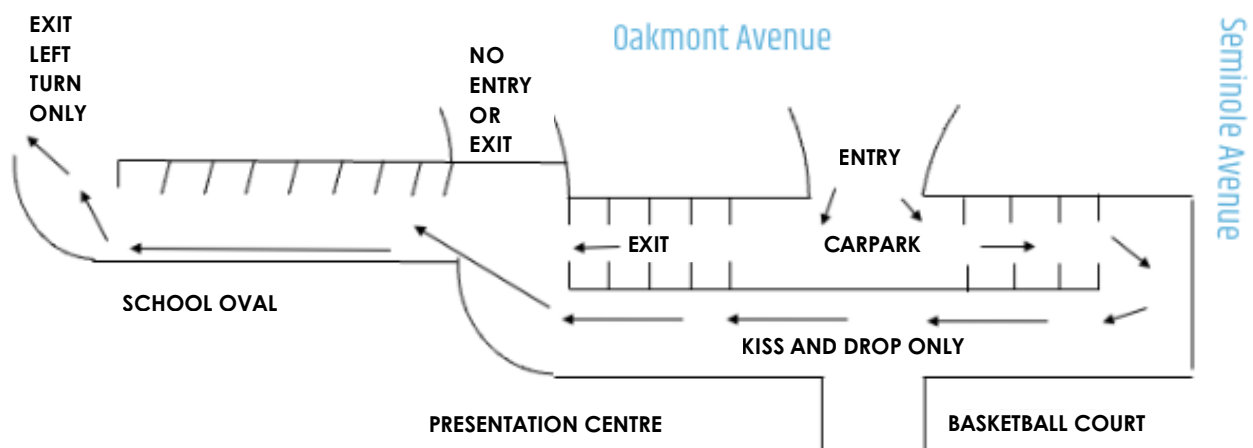
WHERE TO PARK AT SCHOOL

The car park for parents is located at the rear of the school on **Oakmont Avenue**.

Please do not park vehicles in the area designated for dropping off and picking up students.

Parents are requested to reverse park so that when leaving, vision is clear, and all of our children are safe.

There is a second car park located at the front of the school on Gordon Road. Please note this is for the use of staff only.



ARRIVAL AND DEPARTURE PROCEDURES

- Please bring your children to school and supervise them until the Pre Kindy **door opens** at **9.00am**.
- We encourage you to **join your child** in Pre Kindy from **9.00am to 9.15am**. This is a great time to read a book, engage in a puzzle or activity with your child.
- If your child needs to be collected from school early, you are required to sign your child out in the administration office before picking them up from the classroom.
- If another person is collecting your child, a written note in the classroom communication book, or a phone call to the school, is required.
- Children are expected to be **collected at 2.50pm from the Pre Kindy classroom**.
Please try to ensure that children are collected on time, as they can become upset if their parent or carer is late.
- Sometimes it is unavoidable to be late.
Please phone the school on **08 9583 8500** if this is the case.



THE MORNING ROUTINE

- 1 Classroom door opens**
At 9.00am.
- 2 Children place their bag on the bench**
Outside in their designated spot.
- 3 Children remove their belongings from their school bag**
Children get their hat, food containers and water bottle out of their school bag.
- 4 Bring belongings into the classroom**
Children put their hat and food containers in their named pigeon-hole (teachers will assist), their water bottle on the designated shelf, and place Crunch&Sip into the labelled box.
- 5 Parents / carers leave the classroom**
At 9.15am we encourage you to say goodbye to your child before you leave. Children are to remain in the classroom with the teacher and education assistant.
- 6 Children play in the classroom**
Until the pack away song/chime is played.
- 7 Children pack away toys and sit on the mat**
Ready to start the day!

SETTLING IN

Your child may need to learn how to be away from you, as their primary caregiver, and it may take some time to learn to cope with their new environment and routine.

It is very important that each child feels happy and comfortable in the Pre Kindy environment

The Pre Kindy educators will work closely with families to ensure that children are given the best chance to settle in at their own pace.

HOW TO COMMUNICATE WITH YOUR CHILD'S TEACHER

SEQTA Engage

The main way teachers and families communicate is via SEQTA Engage. At enrolment, our administrative assistant would have arranged for a welcome email to be sent to you providing instructions on how to use the communication App. If you need further assistance, please contact us on 08 9583 8500 or visit the administration office.

Communication Diary

Located at the entrance to the classroom is a communication diary. This is used by you to let the Kindergarten teacher know if:

- Someone else will be picking up your child
- Your child has a planned absence.

Meeting In Person

If you have any queries, concerns or information regarding your child's well-being, please do not hesitate to speak with your child's teacher. They are available for a quick chat before or after school. However, please make an appointment if you would like to have a longer one on one conversation.



Please refer to the Information Handbook for Families about how we communicate with families including sending photos through the Seesaw App, monthly newsletters and the Weekly Happenings

The handbook is available on our website and from the administration office

MORE INFORMATION

Please refer to the **Information Handbook for Families** available at the administration office or on our website located at **www.assumption.wa.edu.au/families** for more information about our school including:

- Curriculum
- OSHClub
- Code of Conduct
- Policies and procedures including for Positive Behaviour
- Parent help and volunteering by joining the P & F Association
- Expectations of Students and Parents
- School Health Nurse
- Dental Therapy Clinic

If you have any questions please do not hesitate to contact us.



CONTACT US

E admin@assumption.wa.edu.au **P** 08 9583 8500

22 - 34 Gordon Road Meadow Springs WA 6210

PO Box 3130 Mandurah East WA 6210



OUR SCHOOL PRAYER

Jesus

We come before you as the Assumption School family.

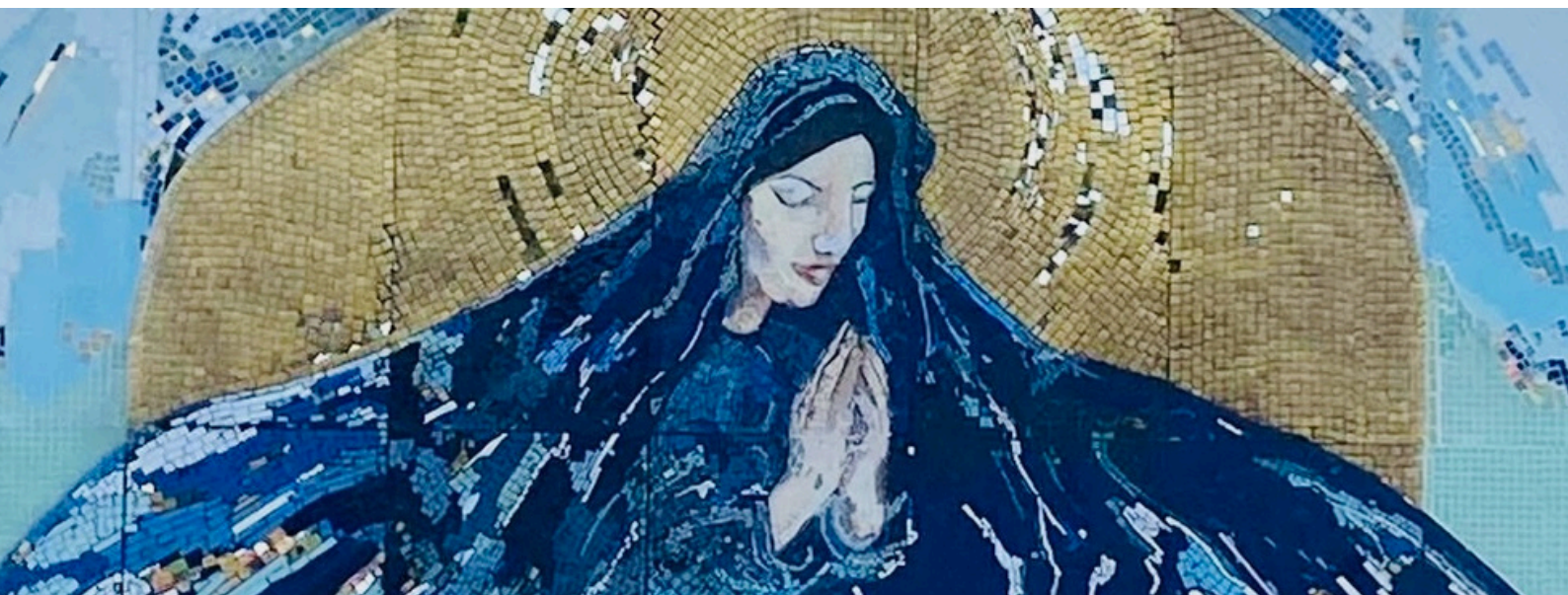
Bless the bonds of friendship that unite us together
and to You.

Through love received and given,
may we grow to be the people You created us to be.

As Mary Your Mother learnt to listen to You,
may she also help us to hear what You are saying in
the things that happen every day.

By our actions may You be more known and loved.

Amen



OUR PRE KINDY PROGRAM

- Encourages the development of positive attitudes towards learning
- Promotes socialisation skills
- Recognises every child is different and unique, allowing them to flourish in mind, body and spirit
- Develops the child's self-confidence, and independence and gives them a sense of achievement in all they do
- Encourages creativity and self-expression
- Promotes connections with our primary school educators including our Auslan specialist and
- Provides opportunities for children to help, share and respect others.

We recognise parents as the first and most influential educators, and our Pre Kindy program complements parents in their efforts to develop the faith of their children.

WHERE AND WHEN IS PRE KINDY?

Pre Kindy takes place **Tuesday** and **Friday** of the school term between **9.00am and 2.50pm**.

We have a designated early childhood area on campus which includes the Kindergarten classrooms and playground.

NOTES

THIS PAGE IS FOR YOU TO JOT DOWN
NOTES OR QUESTIONS



2026 PRE KINDY INFORMATION HANDBOOK



“Every child at Assumption is
known, valued and loved”



ASSUMPTION
CATHOLIC PRIMARY SCHOOL
MANDURAH

08 9583 8500 **P**
admin@assumption.wa.edu.au **E**

assumption.wa.edu.au

2026 PRE KINDY INFORMATION HANDBOOK



“Every child at Assumption is
known, valued and loved”



ASSUMPTION
CATHOLIC PRIMARY SCHOOL
MANDURAH

08 9583 8500 **P**
admin@assumption.wa.edu.au **E**

assumption.wa.edu.au

2026 **PRE KINDY** **INFORMATION HANDBOOK**



“Every child at Assumption is
known, valued and loved”



ASSUMPTION
CATHOLIC PRIMARY SCHOOL
MANDURAH

08 9583 8500 **P**
admin@assumption.wa.edu.au **E**

assumption.wa.edu.au

2025 PRE KINDY INFORMATION HANDBOOK



“Every child at Assumption is
known, valued and loved”



ASSUMPTION
CATHOLIC PRIMARY SCHOOL
MANDURAH

08 9583 8500 **P**
admin@assumption.wa.edu.au **E**

assumption.wa.edu.au

2025 PRE KINDY INFORMATION HANDBOOK



“Every child at Assumption is
known, valued and loved”



ASSUMPTION
CATHOLIC PRIMARY SCHOOL
MANDURAH

08 9583 8500 **P**
admin@assumption.wa.edu.au **E**

assumption.wa.edu.au

TABLE OF CONTENT

3	Welcome
4	Our Pre Kindy program
5	What to wear to Pre Kindy
6	What to bring to Pre Kindy
8	Where and when Is Pre Kindy?
8	Where to park at school
9	Arrival and departure procedures
10	The Morning Routine and Settling In
11	How to communicate with your child's teacher
12	More information
13	Notes
14	Our school prayer